

Thank you for purchasing an Ink2image bulk ink feed system. You have just taken the first step to enjoying the cost saving and superior performance benefits of using Ink2image bulk ink. Ink2image bulk ink feed systems are simple to install, easy to use, and will provide you with many hours of trouble free and lower cost printing. However, the successful use of the system is dependent on how accurately you follow this guide during installation. Please read these instructions and familiarize yourself with the system components before you start the installation. Please also remember that you are now about to start working with bulk ink instead of sealed cartridges. During installation, protect the area around your printer in case of ink spillage and wear the disposable gloves included with the kit. Have a roll of paper towel handy. Remember, accidents can happen!

SYSTEM COMPONENTS

1. Refillable Cartridges (5 for the 7700/9700, 9 for the 7890/9890, 11 for the 7900/9900)
2. Disposable gloves.
3. Chip resetter.
4. 10 ml priming syringe with end adaptor.
5. Filling funnels.
6. Instruction CD or printed instructions.
7. 30 ml pressure test syringe with yellow end adaptor.



STEP 1

Before starting the installation, print a good nozzle check print using the existing inks installed on your printer. Write the date on the print and keep it. No warranty claim regarding the bulk ink feed system will be accepted unless it is supported by a good nozzle check print produced before the system was installed. The utility for producing a nozzle check print can be found under the 'Maintenance' or 'Utilities' tab of the Epson print driver software supplied with your printer.

STEP 2

If you are currently using original Epson Ultrachrome inks in the printer and are about to install Cave Paint Elite Enhanced inks then proceed to step 3. If you are currently using a different ink type, or intend to install a different Ink2image ink than mentioned above, it is a good idea to flush out your printer before installing the system. Otherwise, you will waste a lot of time and ink purging through one ink type to another, or potentially clog your printer. Ink2image supplies Dead Head cleaning fluid for the purpose of flushing the printer and this can be obtained from your local Ink2image supplier. If you are in doubt about the need to flush your printer, then contact your local supplier or e-mail Ink2image at inquiries@ink2image.com. Ink2image will not be held responsible for problems caused by the incompatibility of different ink types.

If you do need to flush out your printer, then fill each refillable cartridge with about 1" of Dead Head cleaning fluid and perform an initial fill routine as outlined in the 'Installing all cartridges at once' section below. Ideally let the printer 'soak' overnight to allow the cleaning fluid to dissolve any dried ink deposits. Remove the refillable cartridges and return any remaining cleaner in the cartridges to the cleaning fluid bottle by pouring the fluid out through the cartridge filling hole. Fill the cartridges with the new ink, and perform another initial fill routine to prime the ink system with ink.

STEP 3 – FILLING THE CARTRIDGES

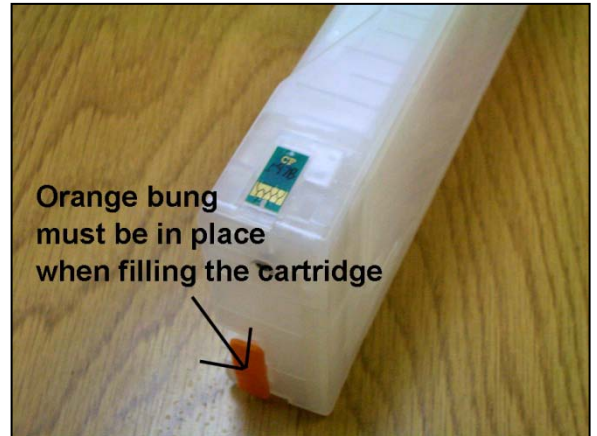
Avoid touching the chips on the cartridges during the filling process, and avoid tipping the cartridges over – always try and keep the cartridges in the same horizontal position that they are when installed in the printer.

Firstly, familiarize yourself with the orange rubber stopper on the back surface of each cartridge. This stopper covers the air pressurization port on the cartridges, and the stopper must be in place during cartridge filling/refilling. This is very important as filling a cartridge without the stopper in place can result in ink getting into the air pressure system on the printer.

Fill the cartridges that you are going to install at this point. To do this, place each cartridge on a flat surface. If you are concerned about spilling ink then place a few layers of paper towel under the cartridge. Remove the bung from the ink filling hole on top of the cartridge. Place a clean filling funnel into the filling hole, as in this picture. Before pouring ink into the cartridge, double check that you are filling the correct color cartridge with the correct ink color. Slowly pour ink into the funnel and fill the cartridge to within 1" (2 cm) of the top (see max fill mark on label). Remove the funnel and put the bung back into the filling hole. Wash out the funnel with water under a faucet, dry the funnel with paper towel, and store in a clean, safe place for use the next time you need to refill. Always keep your cartridges upright and level after filling (as in the picture above) and avoid tipping them up or over – this can introduce ink into the printer air system. Repeat the filling process with each cartridge in turn using a clean funnel for each cartridge and ensuring you fill the correct color ink into the correct color cartridge.

It is advisable to perform a quick pressure test on a refillable cartridge after every refill to test the integrity of the cartridge's internal damper system.

To perform the test, remove the orange stopper from the air pressure connector. Take a 30 ml syringe with yellow end adaptor fitted and push the yellow adaptor over the air pressure connection nipple, as in this picture.



Draw the syringe plunger all the way out to remove 30 ml or so of air from the cartridge. Hold the plunger fully out for a few seconds. If no ink appears in the syringe then the cartridge is good. The syringe with adaptor can be removed from the nipple, and the orange stopper can be replaced on the air pressure connector.

If any ink appears in the syringe during the pressure test, then the cartridge is faulty and should not be installed in a printer. The ink in the cartridge can be saved by pouring it out through the cartridge filling hole. Replacement cartridges are available from the supplier where the kit was purchased.

INSTALLING ALL CARTRIDGES AT ONCE

One at a time, take each filled refillable cartridge, remove the orange rubber stopper from the end of the cartridge (as in this picture), and insert the cartridge into the correct color slot on the printer just as you would a normal cartridge. Keep the orange stopper safe as you will need it next time you need to refill the cartridge. When you have inserted all the refillable cartridges into the appropriate slots, close the cartridge bay doors. Once the cartridges have been recognized by the printer, push the power off button to turn the printer off.



The printer has a handy initial fill routine built into the firmware that fills the machine's ink system with inks or cleaning fluid. The routine is very simple to set and use. You should always bear in mind that the maintenance tank will need at least 25% capacity remaining in order to run the routine. If the maintenance tank is nearly full then the printer will not allow you to run the initial fill, and an empty tank will need to be installed before the routine can be performed.

1. Press and hold down the "Down" arrow, "Right" arrow, and "OK" buttons and then press the power on button.
2. After the printer powers up, release the "Down", "Right" and "Enter" buttons. Display will look like normal.
3. Press the "right" arrow button to enter the service mode menu.
4. Using the "Down" button to navigate to the "Cleaning" menu, and press the "Right" button.
5. Using the "Down" button, navigate to the "Init. Fill" menu, and press the "Right" button.
6. Press the "OK" button to start the initial fill routine.

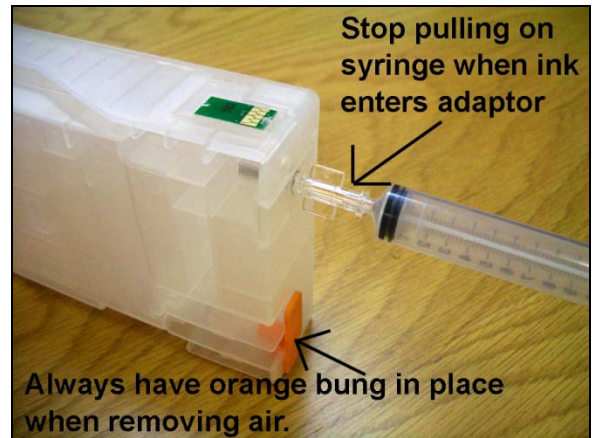
The initial fill routine takes about 10 minutes. When the routine has finished, the display will read 'ready'. To return the machine to normal operating mode, power off and then wait 10 seconds before powering back on, the printer will now start up in normal mode. You should now be ready to print.

PRIMING CARTRIDGES INDIVIDUALLY

If you are installing refillable cartridges one at a time so existing standard cartridges can be used up, you will need to extract a small amount of air from each refillable cartridge that gets trapped during the initial filling process before you first install the cartridge in the printer. Failure to do this will mean that this trapped air will

eventually make its way to the print head and cause some nozzle drop outs during printing. Several cleaning cycles would be needed to remove this air if this happens.

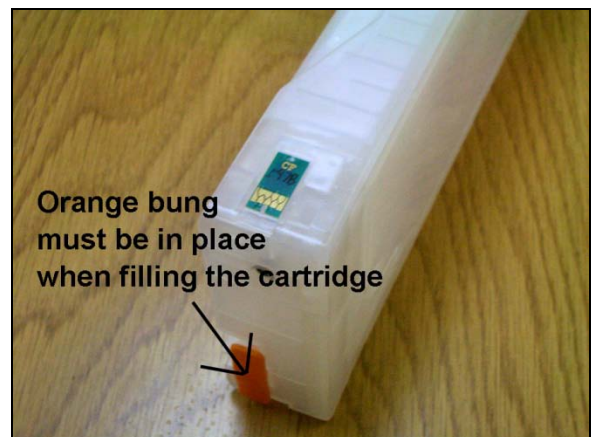
To remove this trapped air, take the priming syringe with end adaptor fitted and gently insert the syringe through the rubber seal in the ink exit valve at the front of a cartridge, as in this picture. Gently pull on the syringe plunger until a small amount of ink is sucked into the syringe. Remove the syringe from the ink exit hole. Any ink in the syringe can be returned to the ink bottle of the appropriate color or type. Wash the syringe out with water under a faucet. Repeat this process with each cartridge you intend to install at this point, remembering to wash out the syringe between colors so that no cross contamination of colors can occur. Once you have removed the air from all the cartridges, install the cartridge or cartridges into the printer just as you would with normal cartridges. **Remember to remove the orange rubber stopper from the air port on each cartridge before you install them.** The printer is now ready to be used. **Please note** that this process of using a syringe to remove air is not required when installing all the cartridges at one time – the machine’s initial fill routine as described in the previous sections will automatically remove the trapped air.



REFILLING THE CARTRIDGES AND RESETTING THE CHIPS

Cartridges should be refilled before the ink levels get to within 1” (2 cm) of the bottom of the cartridge. Before refilling a cartridge or cartridges, always turn off your printer and wait 30 seconds for the pressure in the printer’s air system to dissipate. It is best to work on one cartridge at a time to reduce the risk of putting the wrong color ink in the wrong color cartridge.

Remove the cartridge from the printer and **immediately push an orange stopper over the air port on the back of the cartridge.**



Next, reset the chip on the cartridge so that the cartridge reads full again after it has been refilled. To reset a cartridge chip, line up the chip resetter over the cartridge chip, as in this picture. Gently push the resetter onto the chip (the pins are spring loaded). If the pins on the resetter are lined up correctly with the gold pads then the light on the resetter will flash red for a few seconds and then turn green. The green light indicates that the chip has been successfully reset to full.



Finally, remove the bung from the ink filling hole on top of the cartridge. Place a clean filling funnel into the filling hole, as in this picture. Before pouring ink into the cartridge, double check that you are filling the correct color cartridge with the correct ink color. Slowly pour ink into the funnel and fill the cartridge to within 1" (2 cm) of the top. Remove the funnel and put the bung back into the filling hole. Wash out the funnel with water under a faucet, dry the funnel with paper towel, and store in a clean, safe place for use the next time you need to refill. **After refilling, it advisable to perform the pressure test, as described in step 3 above.**

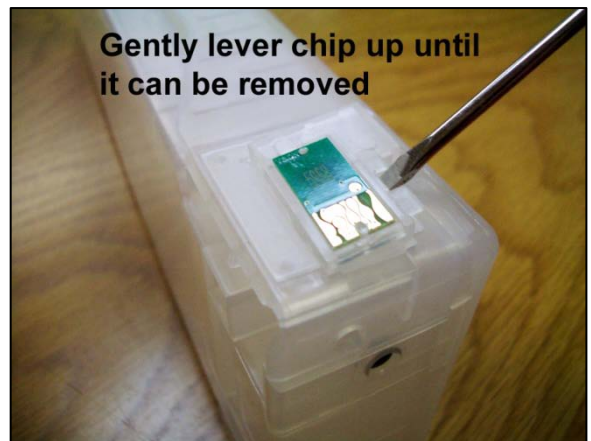


Re-install the filled cartridge back into the printer remembering to remove the orange stopper from the air port before you insert the cartridge into the printer. **If you notice any ink dripping from the air port at this point then the cartridge is faulty and should not be installed in the printer – please contact your supplier if this happens.** Repeat the refilling process with each cartridge in turn using a clean funnel for each cartridge and ensuring you fill the correct color ink into the correct color cartridge.

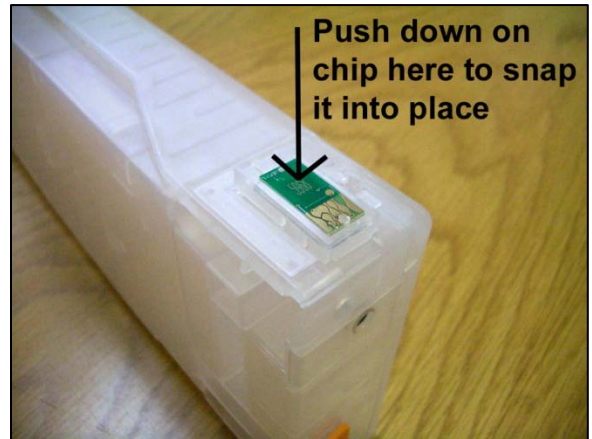
CHANGING A CHIP ON A CARTRIDGE

Cartridge chips do not have an infinite life and will fail periodically. You can prolong chip life by avoiding touching the gold contact on the chips. A chip failure is indicated by either the chip resetter's light remaining red during the resetting process, or by the cartridge not being recognized by the printer after resetting. The refillable cartridge kit includes a spare set of cartridge chips and they are very simple to change.

To change a cartridge chip, a small flat blade screwdriver is required. Insert the screwdriver into the small slot beside the chip, and gently lever the chip assembly up and away from the cartridge, as in these two pictures below.



To install the new chip, simply line up the chip assembly over the recess in the cartridge and push down on the green area of the chip to snap the new assembly into place. Try to avoid touching the gold contacts on the chip during this operation. When the chip assembly is located properly, it will be flush with the top surface of the cartridge. The cartridge can now be inserted into the printer again – new chips do not normally need to be reset. After a chip has been changed, it is wise to purchase a new spare chip from your supplier.



USER TIPS

The use of an Ink2image refillable cartridge system is very simple as long as you remember these important points:-

1. Top up the cartridges regularly with ink. Be aware that certain colors will be used more quickly than others depending on what type of printing you do. For instance, the black ink will be used quicker than the other colors if you print a lot of text. Or, if you print mainly photos, then the light cyan and light magenta will run down first. Never let the ink levels drop below 1" from the bottom of the cartridge and don't fill higher than 1" from the top of cartridge.
2. If you do accidentally let a cartridge run dry, refill the cartridge as described above and then perform two to three power cleans to re-prime the printer's ink system with ink. Unfortunately, this will waste ink of the other colors but there is no way round this. It is best to check ink levels regularly and not let a cartridge run dry.
3. When you have finished printing, always turn your printer off.
4. Always try and use your printer at least once a week, even if you only print one small color print. This will keep the ink fresh in the printer's print heads and reduce the chance of clogging or drying out of the inks. If you are not going to use your printer for more than four weeks, then we recommend removing the ink from the cartridges and flushing the printer with cleaning fluid.

Apart from these points, you should use your printer just as you would with normal cartridges and, as long as you follow these simple guidelines, you will enjoy trouble free and cost saving printing.

If you require technical assistance or support with your Ink2image refillable cartridge system, please initially contact the store or dealer where the system was purchased. All Ink2image dealers are well trained in the operation of the system and can help with most problems. Alternatively, contact Ink2image technical support on 1-800-443-9508 or 847-827-0747, or at inquiries@ink2image.com.

30 DAY GUARANTEE TO REPLACE DEFECTIVE PARTS

Ink2image guarantees all parts are defect-free for a period of 30 days from the date that you receive your new Ink2image refillable cartridge system. If you have received a defective part, please initially contact the retailer or dealer from where the system was purchased.

DISCLAIMER

Because Ink2image refillable cartridges are self installed by the user, Ink2image is not responsible for any damages to your printer, whether they are or are not related to the Ink2image refillable cartridge system. Please contact the store or dealer where the printer was purchased, or the printer manufacturer for any problems or questions related to the printer and its operation.

If the Customer chooses to use ink in the system from another manufacturer other than Ink2image, and is not satisfied with the ink, or it clogs the printer or the bulk feed system, it will be the Customers responsibility to pay for the parts to repair the system and restore it to normal usage. We can only guarantee that the Ink2image refillable cartridge system will deliver Ink2image ink just as well as a normal ink cartridge. We will not accept returns of used systems, or systems filled with third party ink that the customer later decides does not meet their specific needs.